



JED ELDERKIN  
E Marine Motor Yachts  
Suite Q 2 Maritime Court  
Rozelle, NSW, AU  
Office: +61 2 9810 0777  
Mobile: +61 417 200 165  
jed@emarine.com.au



# 2010 Back Cove 37 Classic

Boat Type: Downeast

Address: Rozelle, NSW, AU

Price: \$495,000



## OVERVIEW

Just reduced and represents exceptional value.

One Owner Back Cove 37 Classic.

Lovely vessel that has just (July 2018) completed a magnificent hull respray in Awlgrip Two Pack and comprehensive detail throughout. Fresh antifouling, propspeed and anodes. Looks stunning.

Largest Cummins QSC 8.3 600 power option delivers quiet, comfortable and very economical cruise speeds to 24 knots. Extensive standard equipment list includes Onan Generator, 3 zone reverse cycle A/C, Twin Stidd Seats, Bow Thruster, (plus optional stern thruster).

Options include:

- Watermaker
- Ultra Leather Interior
- Teak Decks
- Cockpit and Swim Platform
- Extensive Canvas Covers
- OceanAIR Interior Blinds
- Searchlight
- Raymarine Electronics Package including: E140W MFD - Autopilot - 24NM Radar - VHF - Stand Alone Digital Depth
- Electric Windlass with Chain Counter
- Stainless Stern Rail and Dinghy Snap Davits

We delivered this Back Cove new to her current and original owners by water to Queensland in 2010. We have just (July 2018) run her back down to Sydney and she performed faultlessly. New batteries and new Battery Charger just installed. She is now located outside our new office at Sydney Superyacht Centre in Rozelle, NSW and seriously for sale.

## SPECIFICATIONS

### Basic Information

Manufacturer:	Back Cove	Vessel Name:	Maine Maid
Model:	37 Classic	Boat Type:	Downeast
Year:	2010	Hull Material:	Fiberglass
Category:	Power	Hull Type:	Modified Vee
Condition:	Used	Hull Color:	Shark Grey Awlgrip
Location:	Rozelle, NSW, AU	Designer:	Back Cove Yachts
Available for sale in U.S. waters:	Yes	Flag of Registry:	AU

### Dimensions & Weight

Length:	38 ft - 11.58 meter	Draft - max:	3 ft 7 in - 1.09 meter
LOA:	42 ft 8 in - 13.01 meter	Bridge Clearance:	12 ft 6 in - 3.81 meter
Beam:	13 ft 3 in - 4.04 meter	Dry Weight:	22000 ft - 6705.6 meter

Engine

Make:	Cummins	Engine Type:	Inboard
Model:	QSC 8.3	Drive Type:	Direct Drive
Engine(s):	1	Fuel Type:	Diesel
Hours:	250	Horsepower:	600 (Individual), 600 (combined)
Cruise Speed:	28 MPH	Max Speed:	33 MPH
Range:	325 MI	Joystick Control:	Yes

Tank Capacities

Fuel Tank:	300 gallons - 1 tank(s)	Holding Tank:	189 gallons - 1 tank(s)
Fresh Water Tank:	454 gallons - 1 tank(s)		

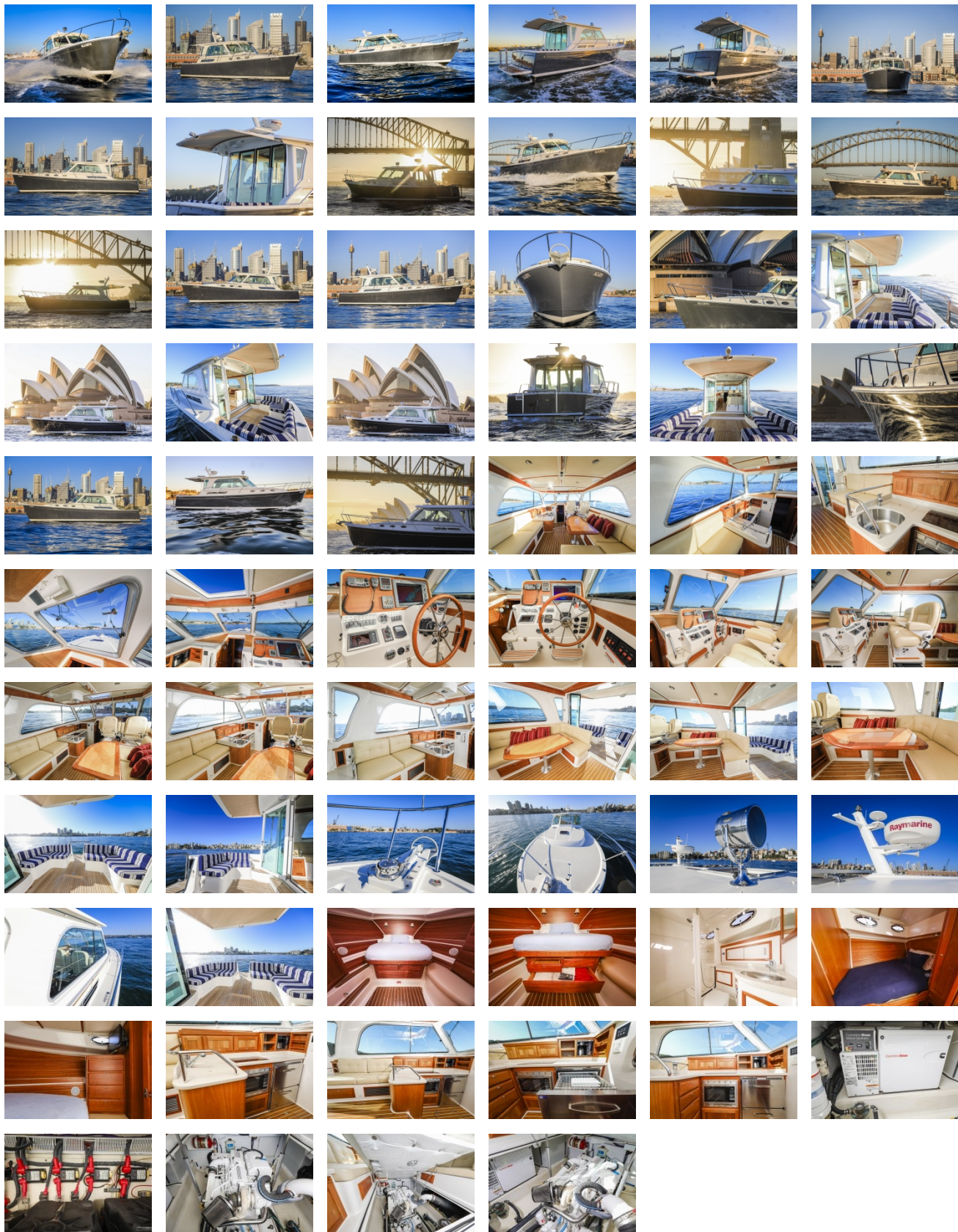
Accommodations

Total Cabins:	2	Crew Cabins:	-
Total Berths:	-	Crew Berths:	-
Total Sleeps:	5	Crew Sleeps:	-
Total Heads:	1	Crew Heads:	-
Captains Cabin:	-		

DESCRIPTIONS



GALLERY



LOCATION MAP





JED ELDERKIN  
**E Marine Motor Yachts**  
Suite Q 2 Maritime Court  
Rozelle, NSW, AU  
Office: +61 2 9810 0777  
Mobile: +61 417 200 165  
[jed@emarine.com.au](mailto:jed@emarine.com.au)

